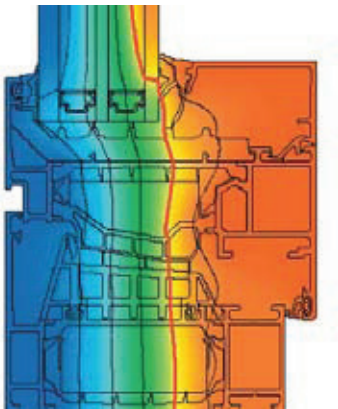


Passive house standard: the new thermal insulation standard for aluminium windows



Flujo isotérmico Schüco Ventana AWS 90.SI+
Schüco Window AWS 90.SI+ isothermal
flow

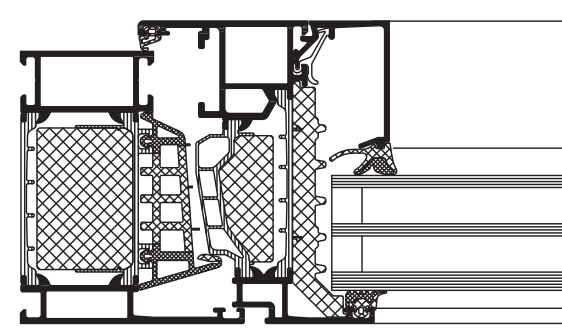
With the new aluminium window Schüco AWS 90.SI+, the benefits of aluminium are combined with pioneering thermal insulation for sustainable architecture.

The Schüco AWS 90.SI+ window not only fulfils the complex requirements for maximum thermal insulation previously restricted to PVC-U and timber windows. Excellent thermal insulation achieved using the Schüco AWS module meets the highest architectural requirements for design options with a basic depth of just 90 mm.

Combined with the concealed Schüco AvanTec fittings, transparent formats up to 160 kg can be implemented and combined with Schüco TipTronic, additional energy-saving potential in buildings can be exploited.

Features and benefits

- Highest levels of thermal insulation with a basic depth of 90 mm:
 U_f value of 1.0 W/m²K
(face width of 117 mm)
- $U_w = 0.8$ W/m²K
(with $U_g = 0.6$ W/m²K and plastic spacers)
- Co-extruded centre gasket with fins
- Optimised insulation zone with foam-filled insulating bars
- Comprehensive range of profiles for diverse solutions
- Compatible with door series ADS 90 PL.SI



Sección horizontal de Schüco Ventana AWS 90.SI+
Horizontal section of Schüco Window AWS 90.SI+

Escala 1:2
Scale 1:2